



National Institute for Earth Physics - Magurele

Seismic report - manual

Event local time: Wed May 01,2019 09:00:06

Romania - Event 91060006 - Crisana seismic zone

Wed May 1, 2019 06:00:06 GMT ML 4.0 N47.19 E23.06 Depth: 1.9km ID:91060006

Seismicity of Romania - latest large crustal earthquakes

Date	Time	Lon	Lat	Depth	Mw
22-Nov-2014	19:14:17	27.15	45.87	40.9	5.4
03-Oct-2004	09:02:04	28.92	45.21	3.7	4.7
02-Dec-1991	08:49:41	21.12	45.45	9.0	5.5
18-Jul-1991	11:56:31	22.35	44.90	12.0	5.6
12-Jul-1991	10:42:21	21.05	45.38	11.0	5.6
01-Apr-1988	07:15:44	27.70	47.90	17.0	4.2
19-Jul-1987	02:18:56	27.79	45.55	15.0	4.4
13-Nov-1981	09:07:08	29.00	45.17	15.0	5.1
11-Sep-1980	23:24:25	28.03	45.32	20.4	4.2
07-Jun-1979	21:20:36	27.41	45.83	31.6	4.1

Source: ROMPLUS Catalogue

Romania - Event 91060006 - Crisana seismic zone

Attenuation laws - GMPE::BJF97 IPE::TA09_mmi

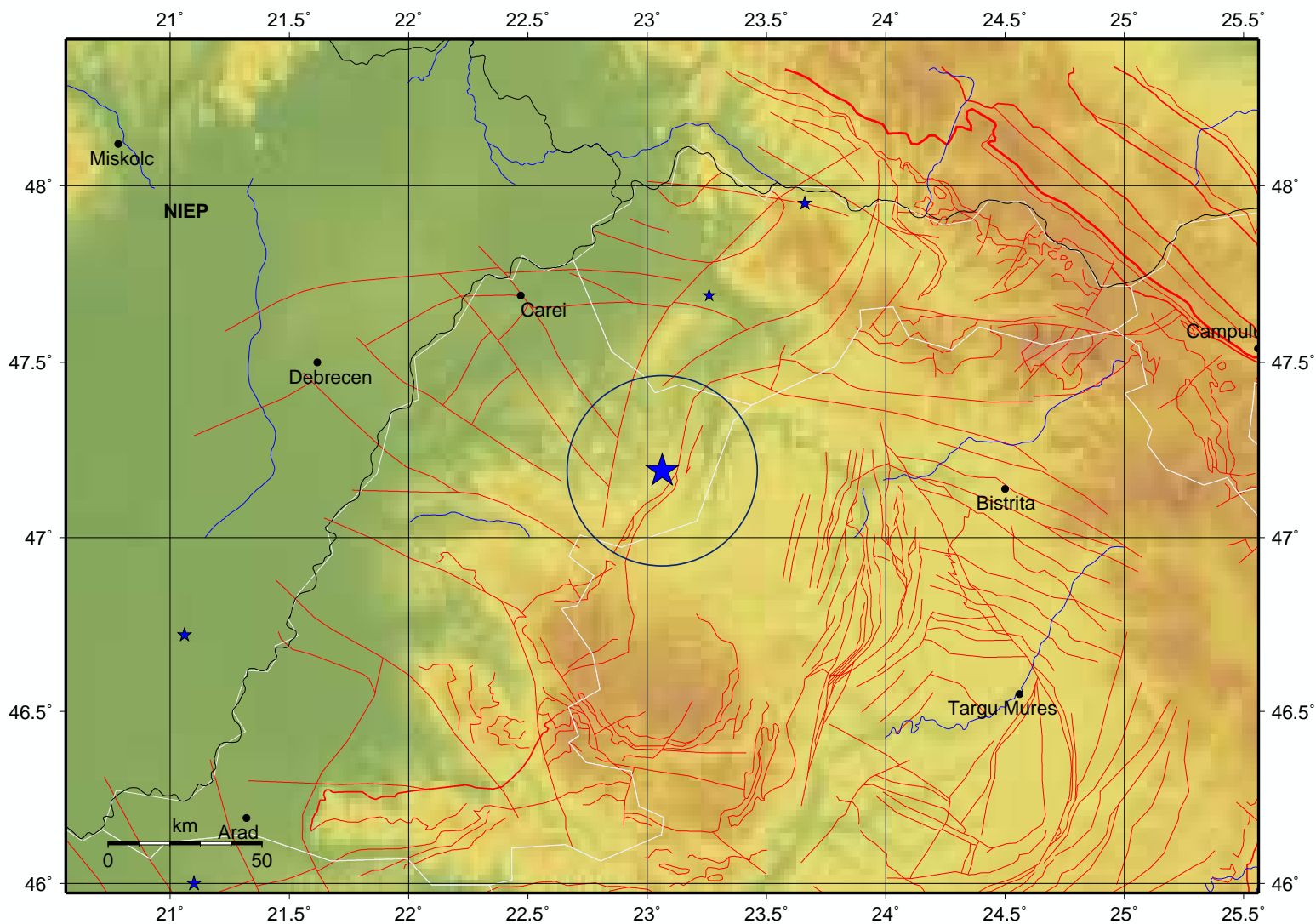
Max. grid values - pga: 2.3155(%g) pgv: 0.4351(cm/sec) mi: 4.9

Wed May 1, 2019 06:00:06 GMT ML 4.0 N47.19 E23.06 Depth: 1.9km ID:91060006 **Mw 3.2**

Local time

Wed May 01, 2019 09:00:06

Fault lines 

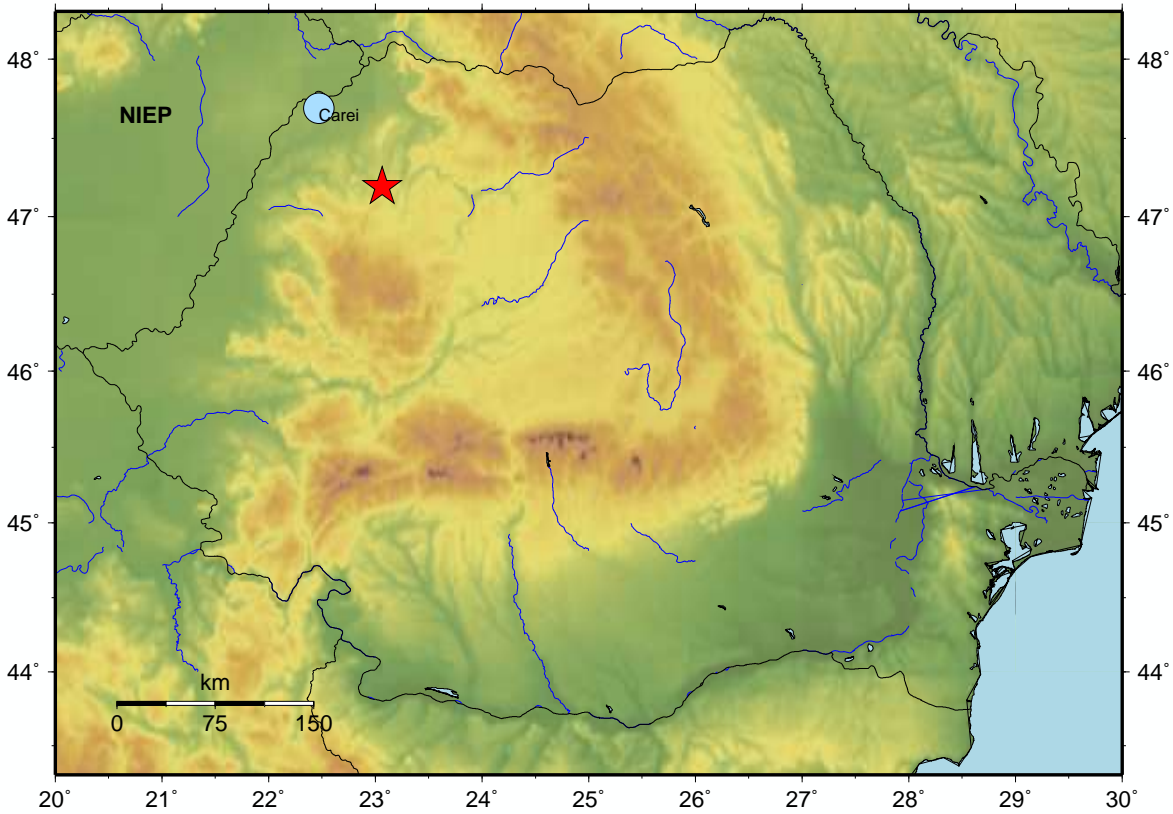


Estimated intensities based on IPE::TA09_mmi attenuation law

Epicentral intensity: V

Wed May 1, 2019 06:00:06 GMT ML 4.0 N47.19 E23.06 Depth: 1.9km ID:91060006

City	Distance(km)	Intensity
Carei	71	II-III

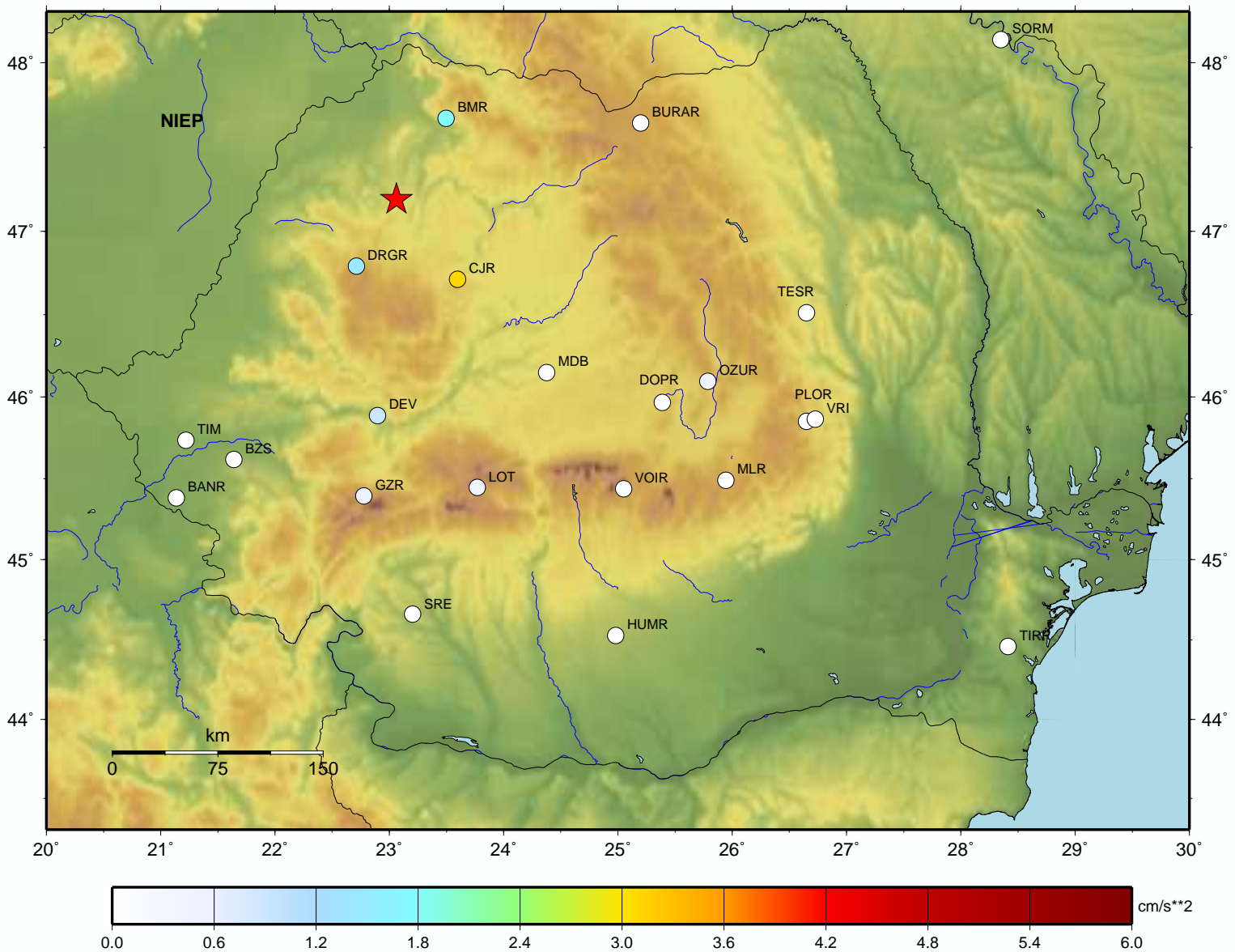


PERCEIVED SHAKING	Not felt	Weak	Light	Moderate	Strong	Very strong	Severe	Violent	Extreme
POTENTIAL DAMAGE	none	none	none	Very light	Light	Moderate	Moderate/Heavy	Heavy	Very Heavy
INSTRUMENTAL INTENSITY	I	II-III	IV	V	VI	VII	VIII	IX	X+

Observed stations accelerations - Antelope platform (cm/sec**2)

Maximum observed acceleration: CJR_HHN -3.1078

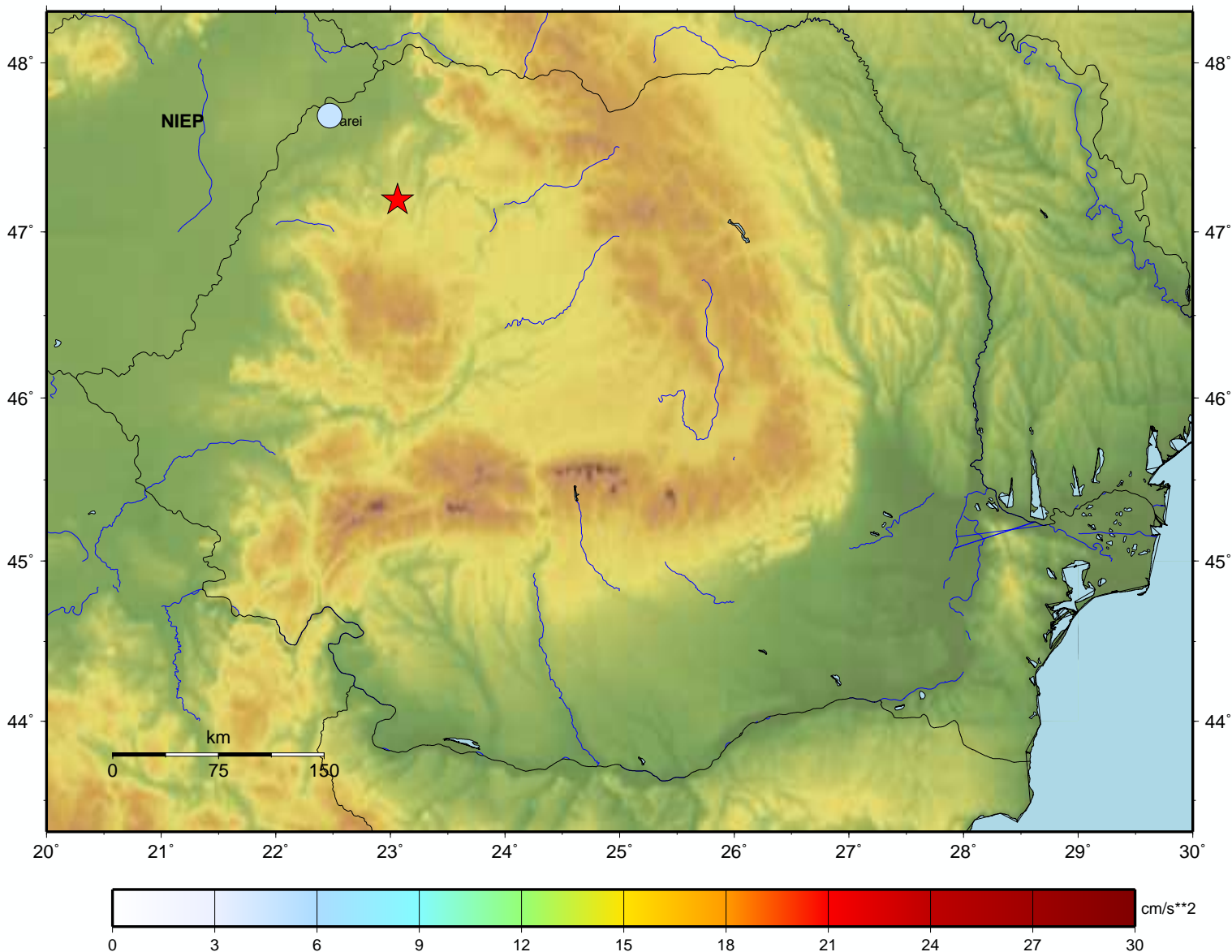
Wed May 1, 2019 06:00:06 GMT ML 4.0 N47.19 E23.06 Depth: 1.9km ID:91060006



Estimated accelerations based on GMPE::BJF97 attenuation law

Maximum grid acceleration: 22.7151 (cm/sec**2); magnitude bias: -2.00

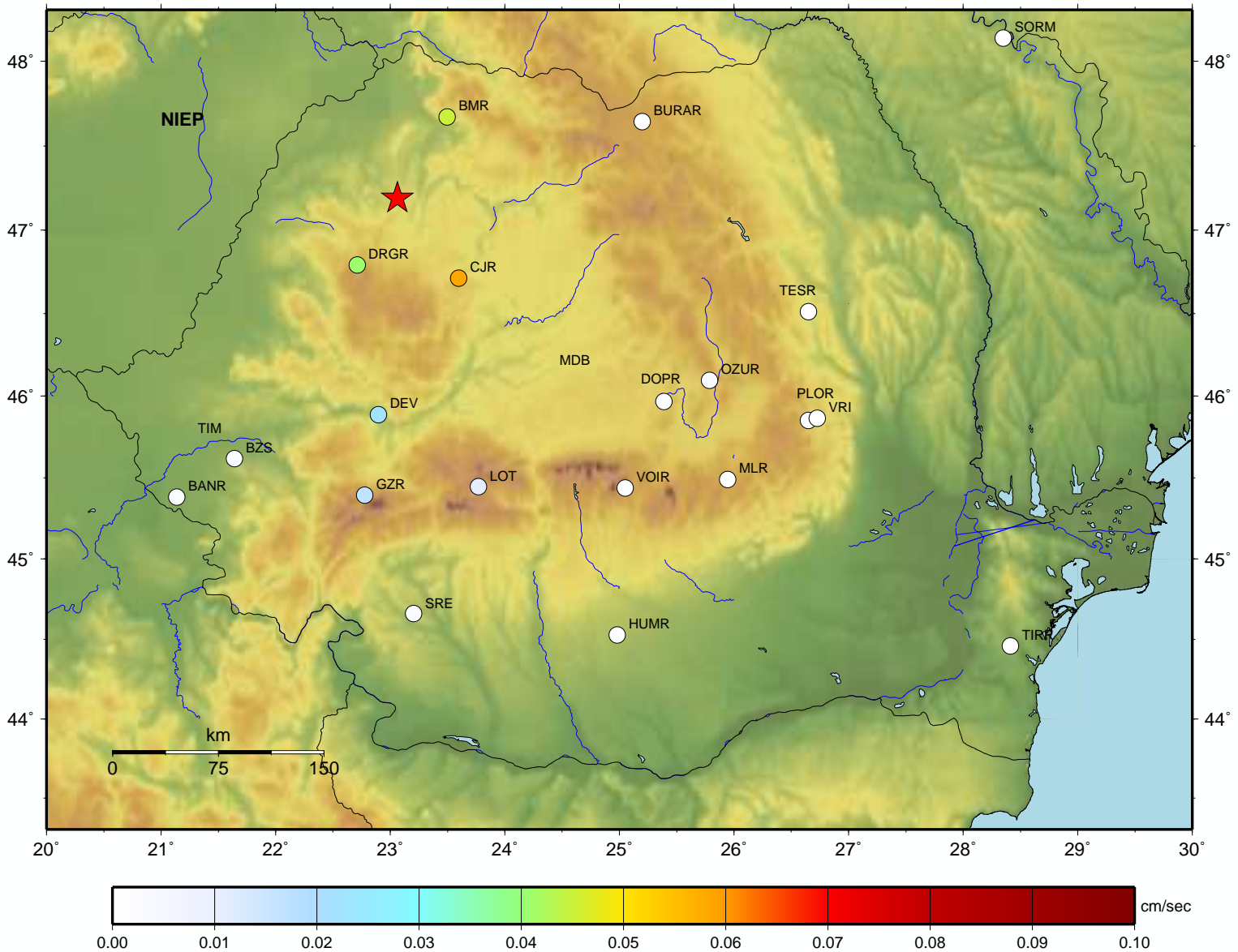
Wed May 1, 2019 06:00:06 GMT ML 4.0 N47.19 E23.06 Depth: 1.9km ID:91060006



Observed stations velocities - Antelope platform (cm/sec)

Maximum observed velocity: CJR_HHN 0.0585

Wed May 1, 2019 06:00:06 GMT ML 4.0 N47.19 E23.06 Depth: 1.9km ID:91060006



Estimated velocities based on GMPE::BJF97 attenuation law

Maximum grid velocity : 0.4351 (cm/sec); magnitude bias: -1.30

Wed May 1, 2019 06:00:06 GMT ML 4.0 N47.19 E23.06 Depth: 1.9km ID:91060006

