



National Institute for Earth Physics - Magurele

## Seismic report - manual

Event local time: Tue Dec 29,2015 20:56:28

Romania - Event 29185628 - Fagaras-Campulung seismic zone

Tue Dec 29, 2015 18:56:28 GMT ML 4.2 N45.46 E24.18 Depth: 2.3km ID:29185628

## Seismicity of Romania - latest large crustal earthquakes

Date	Time	Lon	Lat	Depth	Mw
22-Nov-2014	19:14:17	27.16	45.87	39.0	5.4
03-Oct-2004	09:02:04	28.92	45.21	3.7	4.7
02-Dec-1991	08:49:41	21.12	45.45	9.0	5.5
18-Jul-1991	11:56:31	22.35	44.90	12.0	5.6
12-Jul-1991	10:42:21	21.05	45.38	11.0	5.6
01-Apr-1988	07:15:44	27.70	47.90	17.0	4.2
19-Jul-1987	02:18:56	27.79	45.55	15.0	4.4
13-Nov-1981	09:07:08	29.00	45.17	15.0	5.1
11-Sep-1980	23:24:25	28.03	45.32	20.4	4.2
07-Jun-1979	21:20:36	27.41	45.83	31.6	4.1

Source: ROMPLUS Catalogue

### Romania – Event 29185628 – Fagaras–C–lung seismic zone

Attenuation laws – GMPE::BJF97 IPE::TA09\_mmi

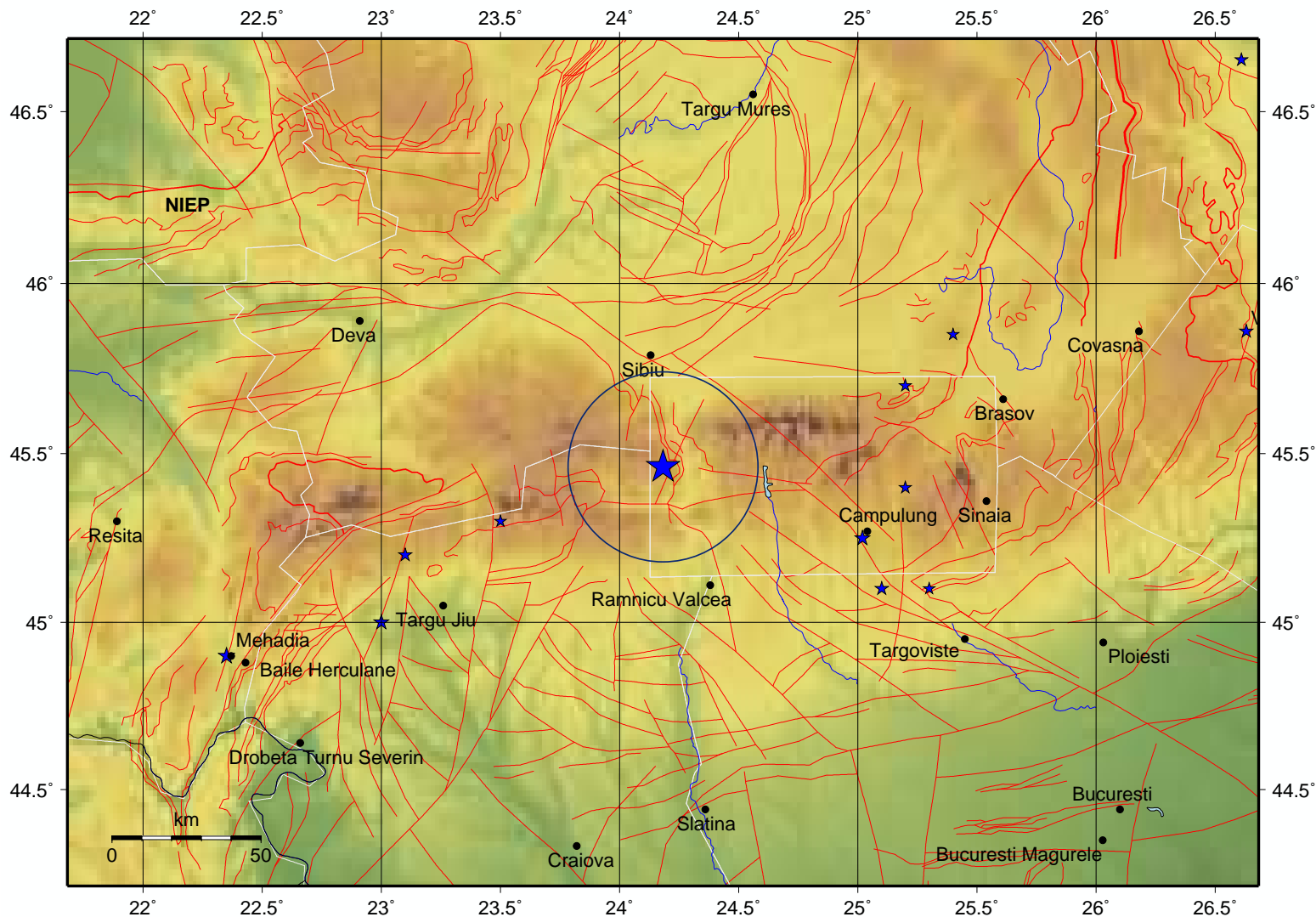
Max. grid values – pga: 8.0359(%g) pgv: 2.7241(cm/sec) mi: 5.2

Tue Dec 29, 2015 18:56:28 GMT ML 4.2 N45.46 E24.18 Depth: 2.3km ID:29185628 **Mw 3.3**

Local time

Tue Dec 29, 2015 20:56:28

Fault lines ———

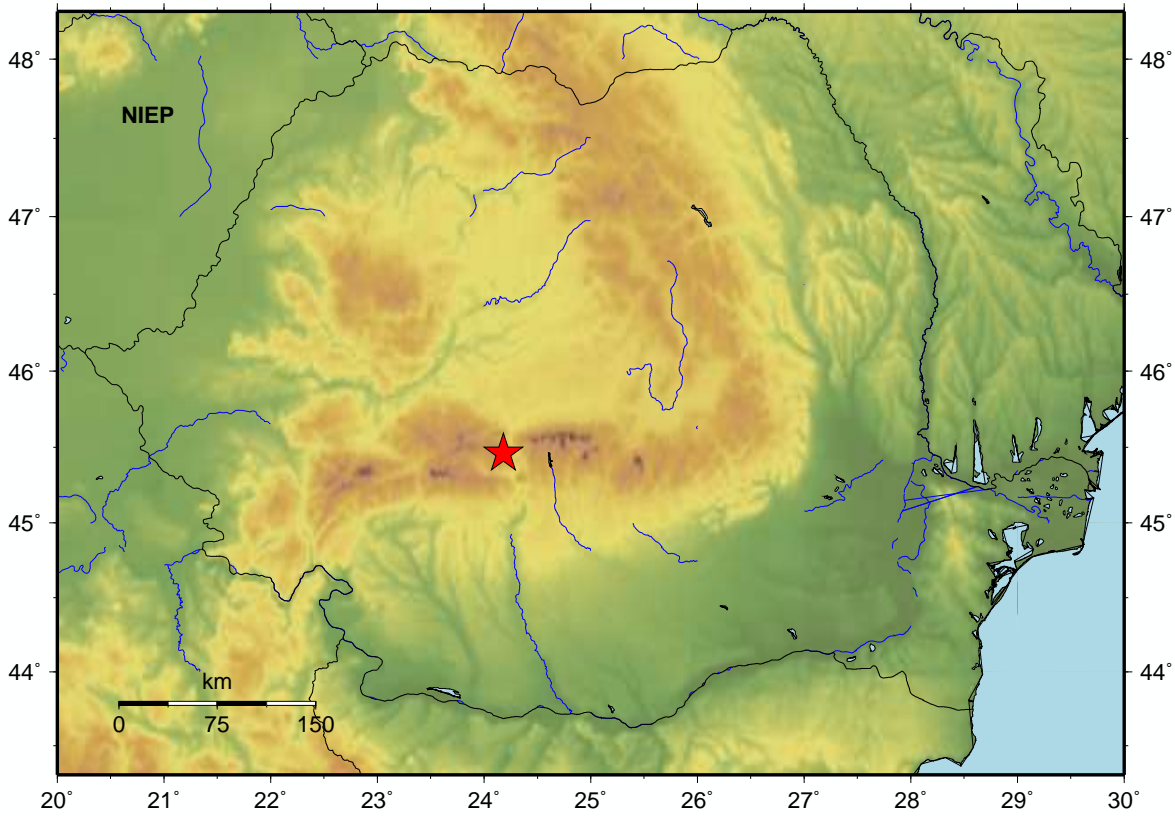


**Estimated intensities based on IPE::TA09\_mmi attenuation law**

Epicentral intensity: V

Tue Dec 29, 2015 18:56:28 GMT ML 4.2 N45.46 E24.18 Depth: 2.3km ID:29185628

City Distance(km) Intensity

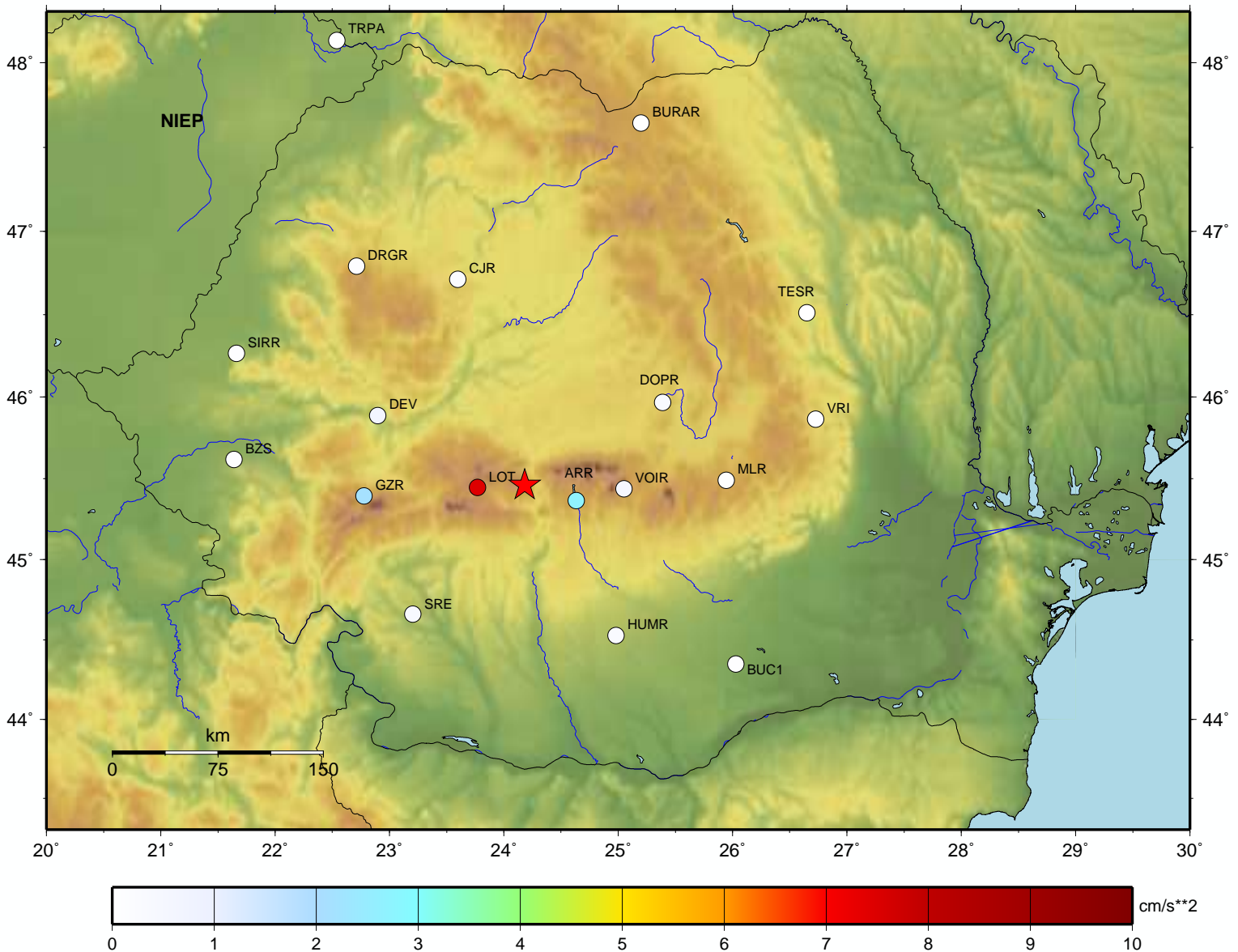


PERCEIVED SHAKING	Not felt	Weak	Light	Moderate	Strong	Very strong	Severe	Violent	Extreme
POTENTIAL DAMAGE	none	none	none	Very light	Light	Moderate	Moderate/Heavy	Heavy	Very Heavy
INSTRUMENTAL INTENSITY	I	II-III	IV	V	VI	VII	VIII	IX	X+

### Observed stations accelerations – Antelope platform (cm/sec\*\*2)

Maximum observed acceleration: LOT\_HHN 7.4566

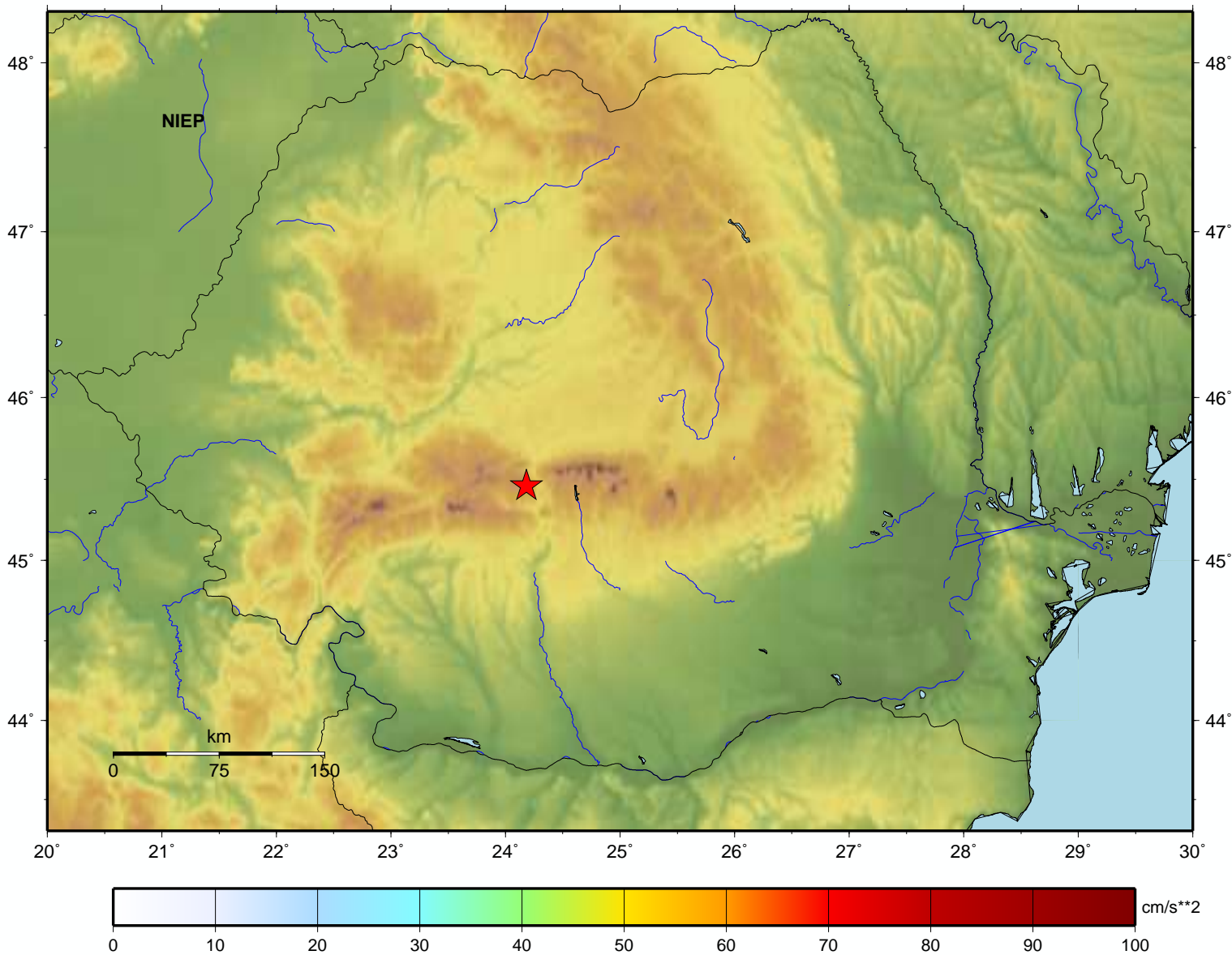
Tue Dec 29, 2015 18:56:28 GMT ML 4.2 N45.46 E24.18 Depth: 2.3km ID:29185628



### Estimated accelerations based on GMPE::BJF97 attenuation law

Maximum grid acceleration: 78.8322 (cm/sec\*\*2); magnitude bias: 0.00

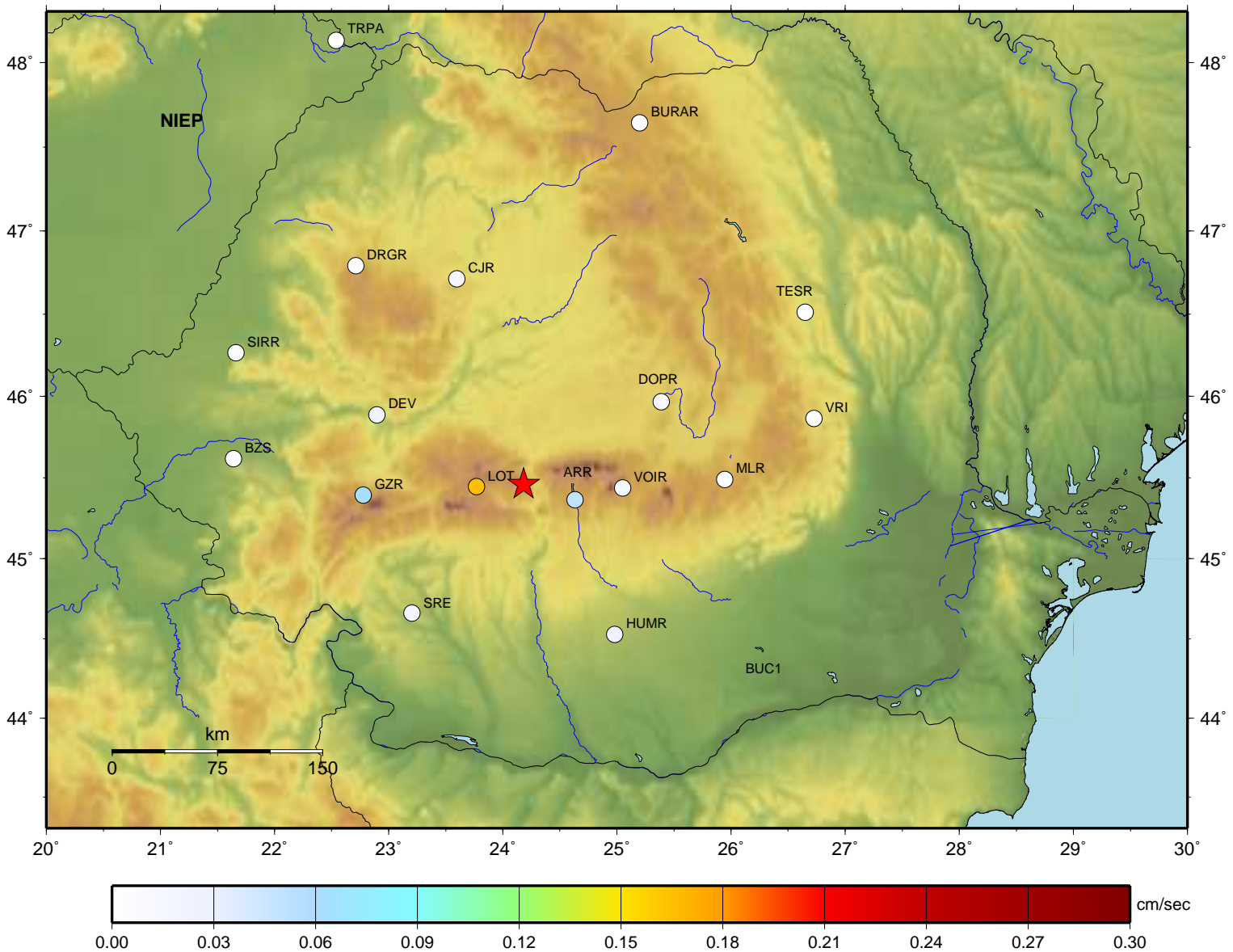
Tue Dec 29, 2015 18:56:28 GMT ML 4.2 N45.46 E24.18 Depth: 2.3km ID:29185628



### Observed stations velocities – Antelope platform (cm/sec)

Maximum observed velocity: LOT\_HHE 0.1660

Tue Dec 29, 2015 18:56:28 GMT ML 4.2 N45.46 E24.18 Depth: 2.3km ID:29185628



### Estimated velocities based on GMPE::BJF97 attenuation law

Maximum grid velocity : 2.7241 (cm/sec); magnitude bias: 0.00

Tue Dec 29, 2015 18:56:28 GMT ML 4.2 N45.46 E24.18 Depth: 2.3km ID:29185628

